

# TWINKLING IRIS SWEATER JACKET

This is a simple pattern for all skill levels, which combines four of Dark Horse's most unique yarns—**TWINKLE, FLAG, KITTEN AND IRIS.**

There are a wide variety of color choices available and given the palate you choose and your region of the country, you may wear this year-round, as it would be a lovely cover-up for the northern tier of the country even during the summer.

The sweater jacket is knit in five pieces with the mandarin collar crocheted from stitches picked up around the neck. And please note as you read, there is no shaping on any of the parts which makes this such a delight to knit and put together as well. So, choose your colors and have fun with this great design.

**SKILL LEVEL:** all levels

## SIZES:

S [ M ] [ L ] [ XL ]

Finished Garment Measurements:

S 36" bust

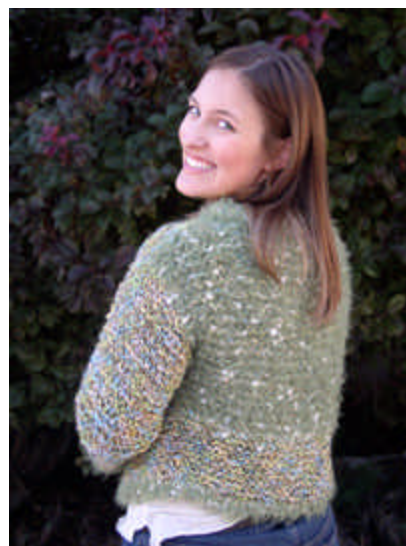
M 39" bust

L 42" bust

XL 45" bust

LENGTH FOR ALL SIZES IS 16"

Note that sizes increase by 3" or 9 sts. given the gauge below. If larger sizing is needed continue to increase 1" at a time or 3 sts. for each inch desired.



## MATERIALS:

In total you will use 4 different Dark Horse yarns for this sweater jacket, though all 4 will not be used at the same time:

	<b>SMALL</b>	<b>MEDIUM</b>	<b>LARGE</b>	<b>XLARGE</b>
• FLAG	13 balls	15 balls	16balls	17 balls
• TWINKLE	5 balls	6balls	7balls	18balls
• IRIS	3 balls	3balls	4balls	5balls
• KITTEN	4 balls	4balls	5balls	5balls
• Size 15 knitting needles				
• Size F crochet hook				
• Size I crochet hook				

## STITCH PATTERN:

The garter stitch [all rows are knit].

## GAUGE:

3 sts = 1”

4 rows = 1”

## SWEATER JACKET:

### Back:

Beginning at the lower back with one strand of FLAG and one strand of TWINKLE:

- Cast on 40 [49] [58] [67] stitches and knit in garter stitch until piece measures 4”, being careful to keep both yarns smooth and together as you knit
- At 4 “ drop the strand of TWINKLE and add one strand each of IRIS & KITTEN—you are now working with three strands of yarn—FLAG, IRIS & KITTEN
- Continue knitting until back measures 15” **NOTE:** if you wish to make your total garment longer you may—but be cautious to remember and make the fronts the same length and that in making it longer you may find it getting a bit tighter over the hip area—if this is the case then I would make one size larger and then determine your length



- Bind off all stitches evenly and gently

### Fronts:

- **You will make 2 fronts—there is no shaping so each will be the same**
- You may wish to knit both fronts at the same time on the same needle—this is helpful as it ensures that both fronts are exactly the same length
- If you choose to knit them at the same time use separate sets of yarn for each front. Keep each yarn ball in a small zip top bag and put both into a larger zip bag, leaving just enough unzipped to allow the yarn to be pulled easily
- For each front use one strand each of TWINKLE & FLAG
- Cast on 20 [24] [28] [32] sts.  
note that to increase the fronts you will increase half the stitches on EACH front which together will make the total of 3” or 9 sts per size—**BUT FOR EASE JUST INCREASE 4 STS FOR EACH SIZE PER SIDE AS 9 DOES NOT DIVIDE EVENLY**
- Remember to keep both yarns smooth and together as you knit
- When front[s] measures 15” bind off all stitches evenly and gently

### Sleeves:

- **You will make 2 sleeves—there is no shaping so each will be the same**
- You may wish to knit both sleeves at the same time on the same needle—this is helpful as it ensures that both sleeves are exactly the same length
- If you choose to knit them at the same time use separate sets of yarn for each sleeve. Keep each yarn ball in a small zip top bag and put both into a larger zip bag, leaving just enough unzipped to allow the yarn to be pulled easily
- For each sleeve use one strand each of TWINKLE & FLAG
- Cast on 30 [33] [36] [39]



Note that the sleeves increase 1” or 3sts for each size. If your arms are fuller or you like a loose sleeve you may adjust your size by 3sts for each inch you wish to increase. This sleeve has been designed to be more fitted, but a looser sleeve will not affect the design of the garment.

- Knit until sleeve[s] measures 12”
- You will now begin to knit the cuff of the sleeve
- drop the TWINKLE yarn and add one ball of KITTEN and one ball of IRIS
- Continue knitting with FLAG, KITTEN & IRIS, keeping all smooth and together as you knit until entire sleeve measures 15”
- Bind off all stitches evenly and gently

### **Finishing:**

- **Place the right sides of the fronts onto the right side of the back** [with the garter stitch the way to tell the right side is by your cast on stitches. Look for the side where the cast on has a prettier edge—the line of the stitches is somewhat slanted] BUT don’t fret with this if you can’t tell as you will edge the entire bottom of the piece with a strand of KITTEN so it won’t be seen, but you should learn to tell the right and wrong sides in the garter stitch for future patterns!

### **Shoulders:**

- Place the top of each front evenly with the top of the back-this will create the shoulders of the sweater jacket.
- Sew each shoulder seam carefully, beginning at the sleeve edge and leaving 5” at each neck edge unstitched [this will flow into the neck and collar of the piece]
- Open the sweater jacket flat with right side up pulling the fronts back on the table so that the right sides face up—the piece will look like a square

### **Sleeves:**

- Determine the right side of each sleeve



- Fold each sleeve in half and mark the center of each—I love using smooth close pins, especially the plastic coated ones, [you can find them in the 99c stores] or just use the basic wooden ones—but always check them for smooth surfaces and lightly sand any rough edges, which if not treated will snag your work
- Open each sleeve and with right sides down place the center of each [where your marker is] on each shoulder seam using the marker pin to clip the pieces together
- Carefully ease each sleeve on both sides of the center marker pin into place-so not stretch the sleeve top-just ease it gently and use a clothespin to keep edges together, placing them every few inches
- Carefully sew the cap of the sleeve into place, using a metal yarn needle and one strand of FLAG—remember to use a gentle even stitch—sew firmly, but do not pull or you will have a puckered cap which often identifies garments as “homemade”—note I did not say Handmade!
- NOTE: the rest of the sleeve will be sew at one time along with the side seam of the sweater jacket which is the next step

### Side Seams:

- Fold the sweater jacket closed again so that the fronts are lying on the back of the piece and the sleeves are on each side lying flat on the table
- Using clothespins repeat the process of matching first the bottom corners of each front to the back which will create the beginning of the side seam
- Continue matching the side seam easing the knitted pieces together and securing them with clothes pins every few inches
- Continue matching the seam at the armhole and along the sleeve length
- Once all clips are in place sew the seam UP TO THE CUFF using one strand of FLAG using same precautions of pulling too tight or stretching the knitted pieces



- At the cuff change yarn to one strand of KITTEN and sew the cuff seam

### **Edging:**

- Using one strand each of IRIS & KITTEN you will edge the entire perimeter of the sweater jacket as follows:
- Turn the piece to the right side, place it on a hard surface and smooth the garment with the palms of your hands
- Carefully but firmly hand-block the side and sleeve seams—this means to hold the seam ends in each hand and EVER SO GENTLY give a little tug-this will help to ease the stitches into place
- Then lay it flat on the surface again and press with the palms of your hands
- Starting at the top right front corner and working with the right side facing you do an easy half double crochet [hdc] down the right front, along the lower back edge and up the front of the left side
- Continue along neck edge doing one row of hdc
- You should now have a wispy edge of KITTEN & IRIS around the entire garment

### **Collar:**

- Using one strand each of KITTEN, IRIS & FLAG do 4 [four] rows of hdc beginning and ending at the front edges—this will create a mandarin collar—if you want it wider just add more rows
- Once collar width has been made drop all but the KITTEN yarn and do 1 [one] row of single crochet [sc] around the top of the collar which will give a more finished edge

### **Closures:**

- I have used two sets of crocheted ties on my samples
- You can use these ties and add beads to embellish them



- With one strand each of KITTEN & IRIS and F hook make a 7” tie using the chain stitch, be sure to leave a 3” tail at the beginning and pull the last stitch through locking the chain. Cut the yarn close to the knot—the fuzziness of the fiber will cover the knot
- Repeat process making a total of four ties—I prefer to have only two sets placed above the waist—if you wish to add more down the front that is your choice—it will not affect the design of the garment
- Using clothes pins mark the spots to anchor the ties down the front
- Anchor the ties [using the long tail threaded through a yarn needle] by threading it through the body of knitted fabric, beginning at the front edge and working back about 1 ½”. Secure the ends of the tie, knot carefully dividing the fibers in half and making a knot—DO NOT roll the yarn over your finger to knot it as we do with sewing thread—I am amazed at how many fine knitters destroy the quality of their work using the rolled knots! They are never absorbed into the fibers and will always be felt and usually seen.

**NOW, SIT BACK AND ENJOY YOUR BEAUTIFUL WORK—  
AND BE READY TO GRACIOUSLY ACCEPT THE FLOOD  
OF COMPLIMENTS YOU WILL RECEIVE!!**

Designed by Susan Gail Taylor  
For Dark Horse Yarns, LLC



<http://www.darkhorse yarn.com>

Page 7 of 7